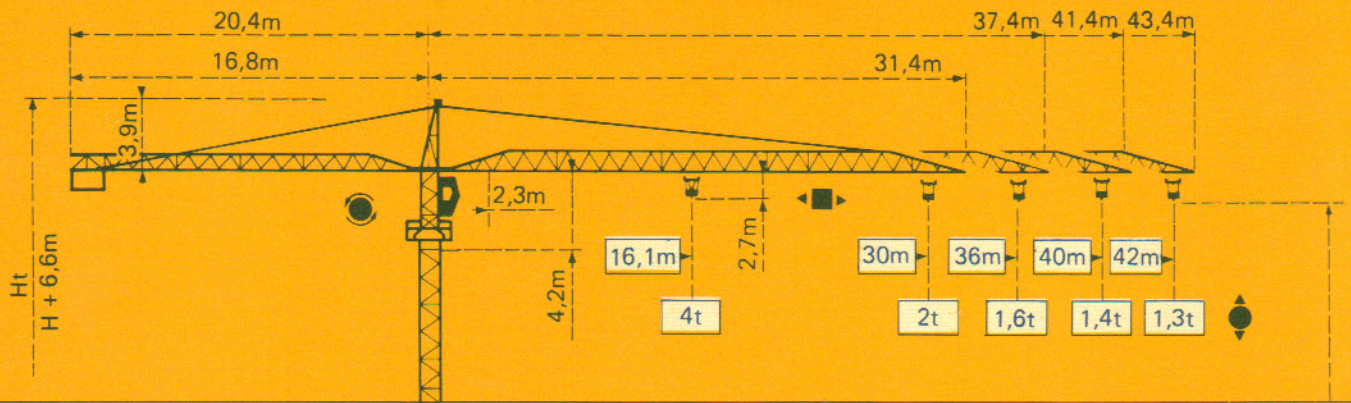


GAT 430

POTAIN 



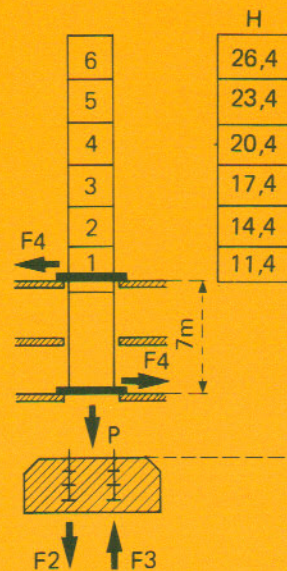
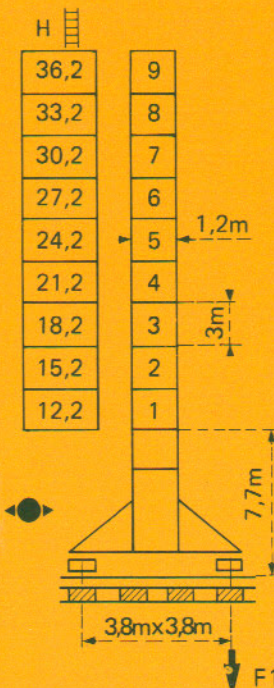
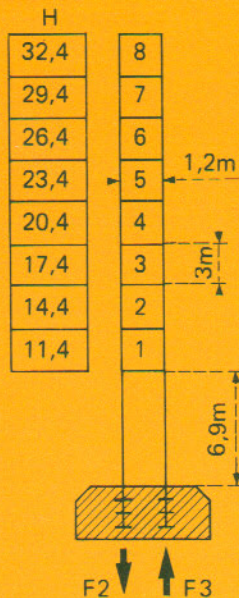
Mature Mast Mast Mástil
 □ 1,2m x 1,2m

$$H = 1 + 8 + 1 = 32,4$$


$$H = 1 + 9 + 1 = 36,2$$


$$H_{\text{curved}} = H_{\text{straight}} + 0,3 \text{ m}$$

$$H = 1 + 6 + 1 = 26,4$$



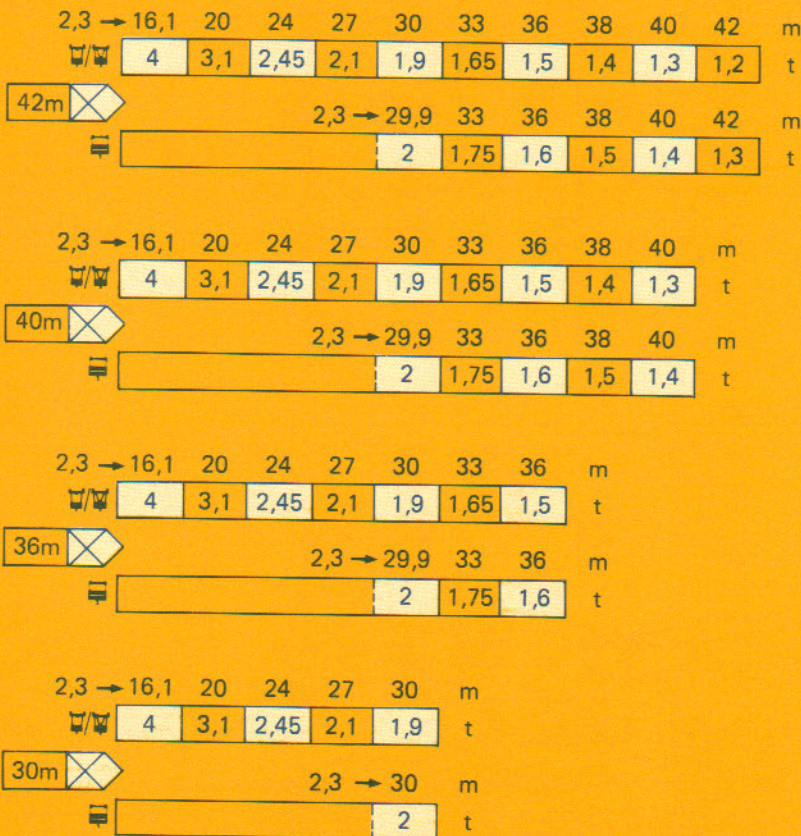
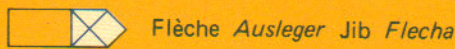
F = Réactions Eckdrücke Reacciones Reacciones

F2	● 50 t	■ 52 t
F3	● 38 t	■ 41 t
	17 t	

F1	● 32 t	■ 38 t
	25 t	

F2	● 44 t
F3	● 32 t
F4	● 8,5 t
P	● 23,7 t

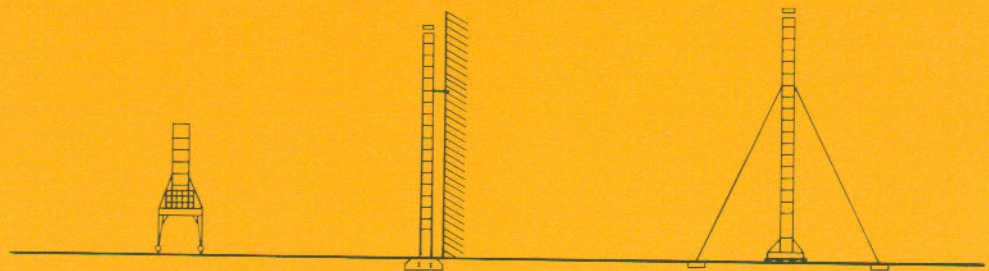
Courbes de charges Lastkurven Load curves Curvas de cargas



- Chariot standard 2/4 brins.
- Chariot optionnel 2 brins uniquement.
- Standardlaufkatze 2/4 Stränge.
- Laufkatze in Sonderausführung mit nur 2 Strängen.
- Standard trolley 2/4 fall.
- Optional trolley 2 fall only.
- Carro standard 2/4 ramales.
- Carro opcional en 2 ramales solamente.

Autres implantations Aufstellmöglichkeiten
Mounting possibilities Otras implantaciones

Nous consulter
Consult us
Bei uns rückfragen
Consultarnos



$H > H_{maxi}$: nous consulter

- En service
- Hors service

A vide sans lest avec flèche et hauteur maximum.

$H > H_{maxi}$: consult us

- In service
- Out of service

Without load and ballast with longest jib and maximum height.

$H > H_{maxi}$: bei uns rückfragen

- In Betrieb
- Ausser Betrieb






















Ohne Last und Ballast mit Maximalausleger und Maximalhöhe.

$H > H_{maxi}$: Consultarnos

- En servicio
- Fuera de servicio

Sin cargas, sin lastre con flecha y altura máxima.

Mécanismes *Antriebe* Mechanisms *Mecanismos*

				m/min	t		ch-PS hp	kW		
Levage Heben Hoisting Elevación	PC 22 D  			8	2	318 m > 318 m *	22	16,2		
				45	2					
				90	1					
				4	4					
				22,5	4					
				45	2					
		Distribution - <i>Katzfahren</i> Trolleying - <i>Distribución</i>		2D2V2	14 42					
Orientation - <i>Schwenken</i> Slewing - <i>Orientación</i>		OMD 30	0,8 tr/min U/min-rpm				8	6		
Translation - <i>Kranfahren</i> Travelling - <i>Traslación</i>		TB	25				2 x 4	2 x 3		
Puissance électrique nécessaire <i>Anschlusswert</i> Necessary electric power <i>Potencia electrica necesaria</i>	380 V 50 HZ  60 HZ *	Réseau - <i>Netzstrom</i> - Mains supply - <i>Red</i>					30 kVA			
							Groupe électrogène <i>Stromaggregat</i> Generator set <i>Grupo electrogeno</i>		*	

* Nous consulter - *Auf Anfrage* - Consult us - *Consultarnos*

POTAIN

18, rue de Charbonnières B.P 173 - F 69130 ECULLY
 Tél. (7) 833.81.81 - Télex 330 179
 EXPORT 207, rue de Bercy - Tour MATTEI - 75012 PARIS
 Tél. (1) 347.30.77 - Télex 215 483
 POTAIN GmbH - D 6082 MÖRFELDEN - WALLDORF
 Nordendstr. 79-87 - Postfach 420 - Tel. (6 105) 5091 - Telex 4 185745
 POTAIN SUISSE S.A. - CH 5115 MÖRIKEN WILDEGG
 Tel. 64.53.19.91 - Telex 68294

Réf. 8209 GAH 1