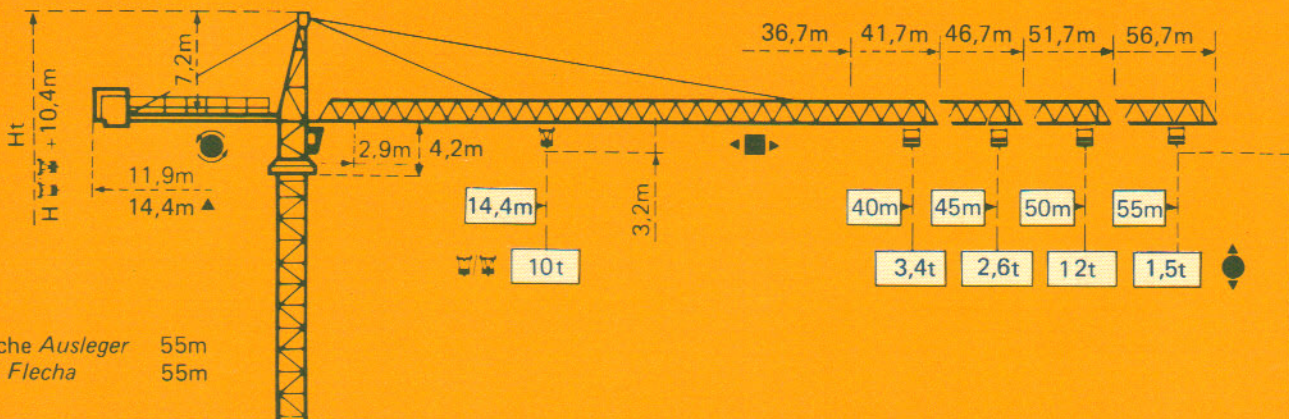


TOPKIT G25 / 15C

POTAIN 



▲ Flèche Ausleger 55m
▲ Jib Flecha 55m

Mature Mast Mast Mástil
□ 1,6m x 1,6m

Mature Mast Mast Mástil
□ 2m x 2m

PA459

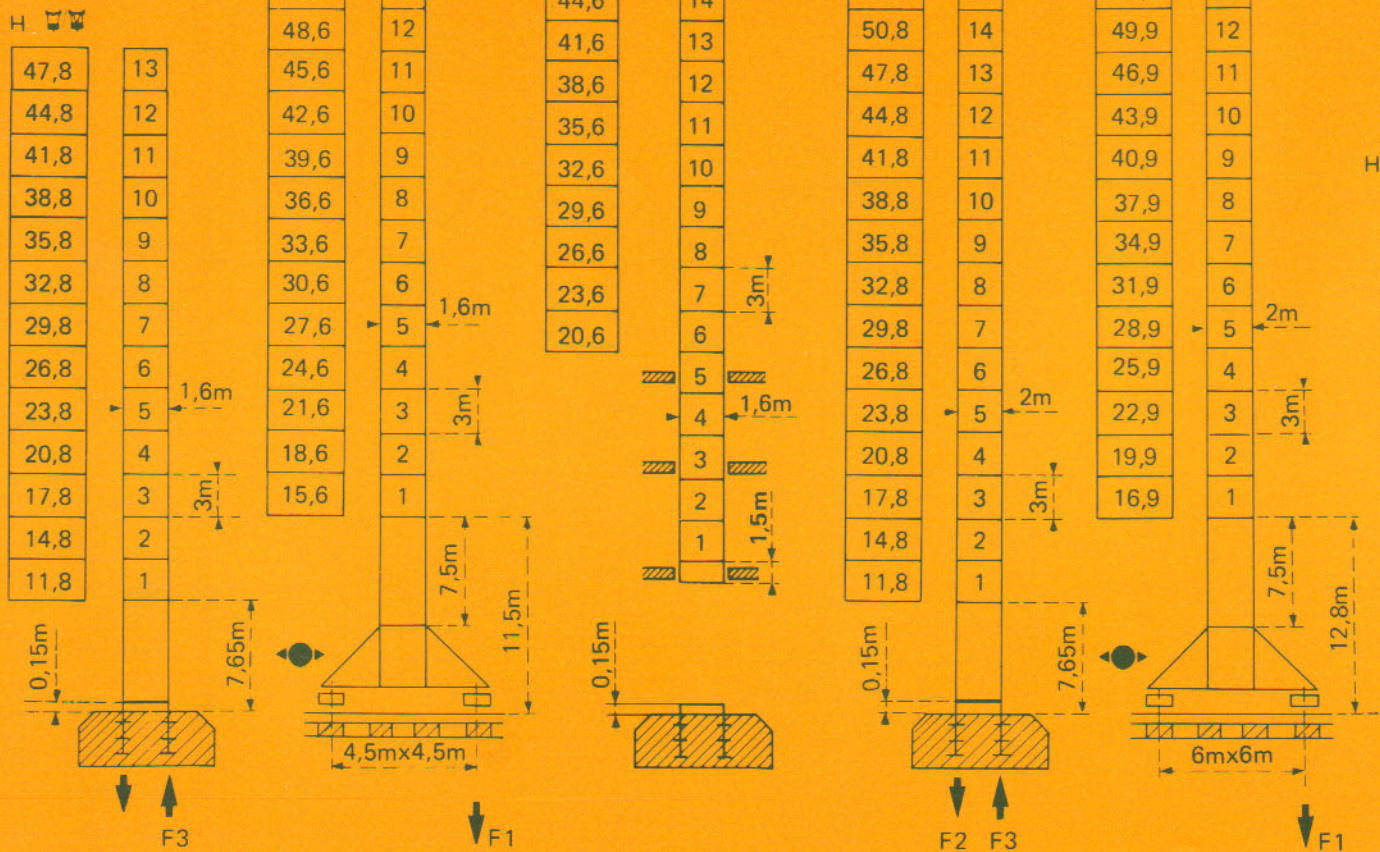
SB459

BA45A


PA663


VB 663

$$H_{\text{total}} = H_{\text{mast}} + 0,7\text{m}$$





F = Réactions Eckdrücke Reactions Reacciones

F2	● 102t	■ 130t
F3	● 70t	■ 103t
	39t	

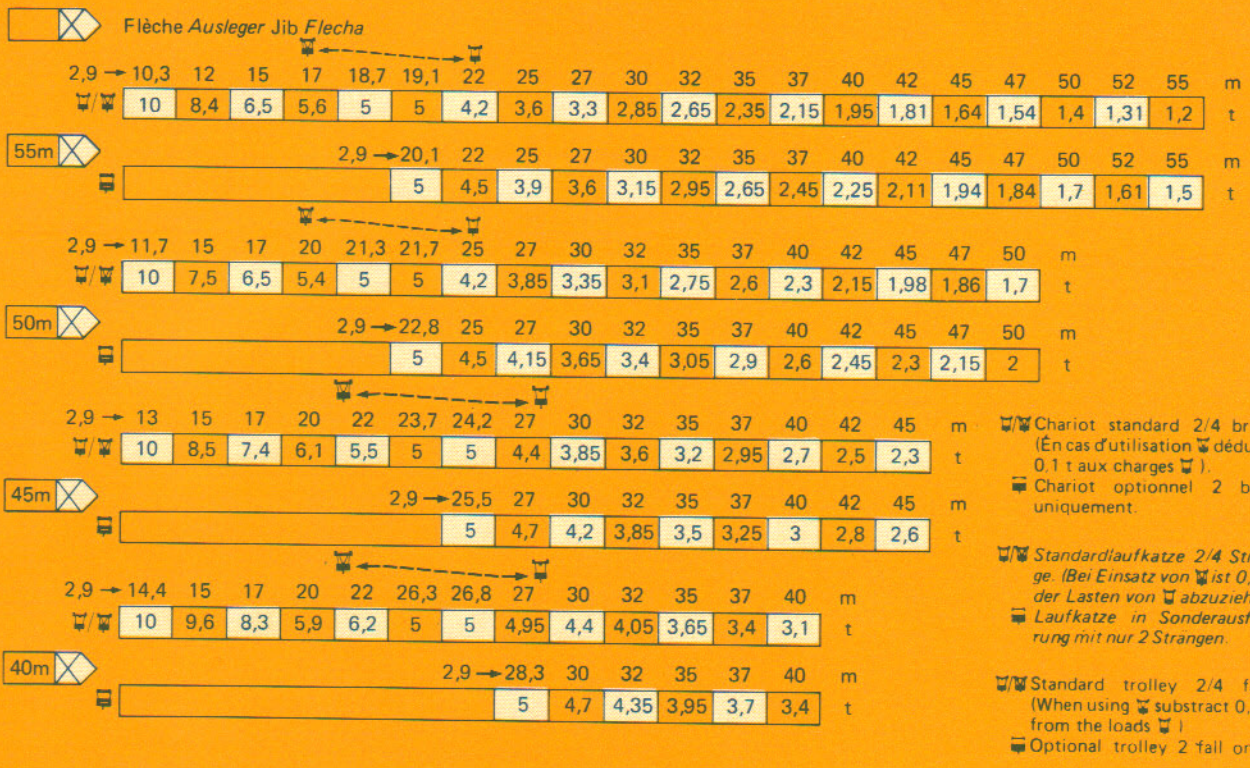
F1	● 76t	■ 94t
	47t	

Voir ci-contre
Siehe nebenstehend
See opposite
Ver página opuesta

F2	● 108t	■ 165t
F3	● 69t	■ 132t
	49,5t	

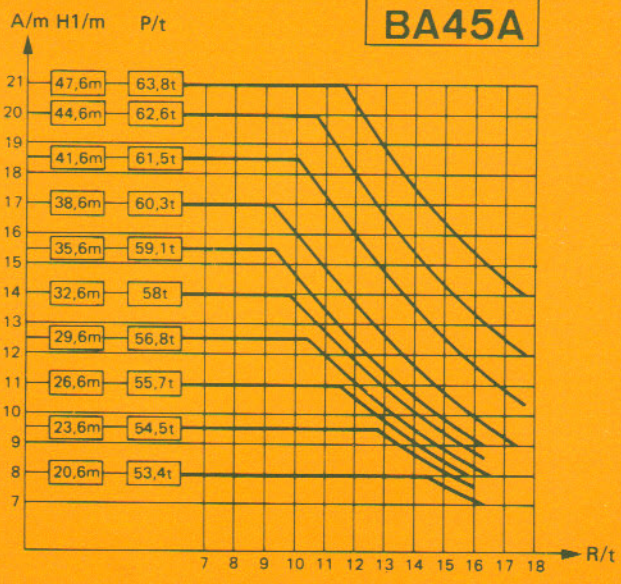
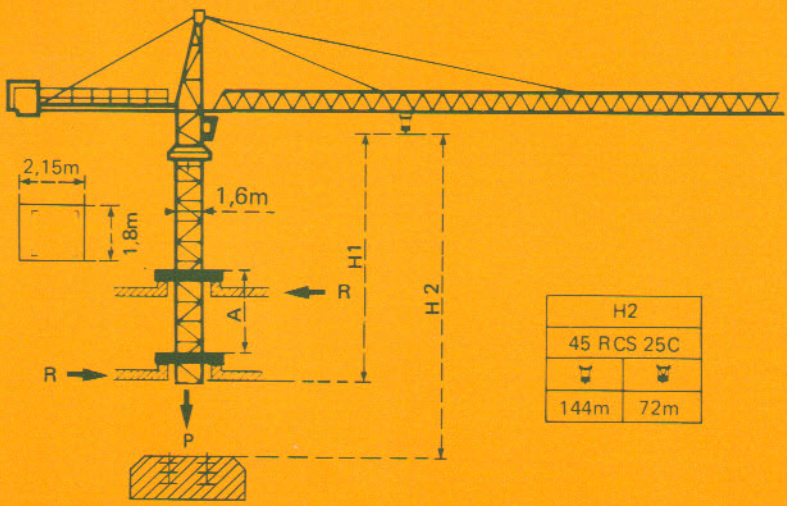
F1	● 86t	■ 115t
	62,5t	

Courbes de charges Lastkurven Load diagrams Curvas de cargas



Chariot standard 2/4 brins. (En cas d'utilisation déduire 0,1 t aux charges).
 Chariot optionnel 2 brins uniquement.
 Standardlaufkatze 2/4 Stränge. (Bei Einsatz von ist 0,1 t der Lasten von abzuziehen.
 Laufkatze in Sonderausführung mit nur 2 Strängen.
 Standard trolley 2/4 fall. (When using subtract 0,1 t from the loads).
 Optional trolley 2 fall only.
 Carro standard 2/4 ramales. (En caso de utilizacion quitar 0,1 t de las cargas).
 Carro opcional en 2 ramales solamente.



















Télescopage sur dalles - Ketterkrane im Gebäude
Climbing crane - Telecopage gruas trepadoras



A Distance entre cadres / **A** Abstand zwischen den Rahmen / **A** Distance between collars / **A** Distancia entre marcos
H1 Hauteur grue / **H1** Kranhöhe / **H1** Crane height / **H1** Altura grúa
P Poids de la grue (En service) / **P** Krangewicht (In Betrieb) / **P** Crane weight (In service) / **P** Peso de la grúa (En servicio)
R Réaction horizontale / **R** Horizontalkräfte / **R** Horizontal reaction / **R** Reacción horizontal

En service / In Betrieb / In service / En servicio
 Hors service / Ausser Betrieb / Out of service / Fuera de servicio
 A vide sans lest avec fleche et hauteur maximum. / Ohne Last und Ballast mit Maximalausleger und Maximalhöhe. / Without load and ballast with longest jib and maximum height. / Sin cargas, sin lastre con flecha y altura máxima.

Mécanismes *Antriebe* Mechanisms *Mecanismos*

				m/min	t		ch-PS hp	kW
Levage Heben Hoisting Elevación	45 RCS 25 C 			0 → 32	5	287 m > 287 m	45	33
				0 → 64	2,5			
				0 → 16	10			
				0 → 32	5			
Distribution - <i>Katzfahren</i> Trolleying - <i>Distribución</i>		6 DPC 4	7,5 30 60				6	4,4
Orientation - <i>Schwenken</i> Slewing - <i>Orientación</i>		OMD	0 → 0,7 tr/min U/min-rpm				8	5,9
Translation Kranfahren Travelling Traslación	SB 459  R ≥ 10m VB 663  R ≥ 13m	RT 324	12,5-25				2 x 7	2 x 5,2
		RC 446 ARC H ≤ 33,6 m	10 - 50				4 x 6,8	4 x 5
		RT 443 A1 2V	15 - 30				4 x 5	4 x 3,7
		RC 646 ARC H ≤ 43,9 m	10 - 50				4 x 6,8	4 x 5
Réseau - <i>Netzstrom</i> - Mains supply - <i>Red</i>							380V - 50 HZ	
Puissance électrique nécessaire - <i>Anschlusswert</i> - Necessary electric power - <i>Potencia electrica necesaria</i>							RCS : 70 kVA	
Groupe électrogène - <i>Stromaggregat</i> - Generator set - <i>Grupo electrogeno</i>								

*Nous consulter - *Auf Anfrage* - Consult us - *Consultarnos*

NF E52081 - 82

POTAIN 

18, rue de Charbonnières B.P 173 - F 69132 ECULLY Cedex
Tél. (7) 833.81.81 - Télex 330 179 F

POTAIN GmbH - D 6082 MÖRFELDEN WALLDORF
Nordendstr. 79-87 - Postfach 420 - Tél. 06105 704.0 - Telex 4.185745
POTAIN SUISSE S.A - CH 5115 MÖRIKEN WILDEGG
Tel. 64.53.19.91 - Telex 981406

TOPKIT G25/15C

Réf. 8513 KNM 1

Modifications réservées - *Anderungen vorbehalten* - Subject to modification - *Modificaciones reservadas*

Printed in France