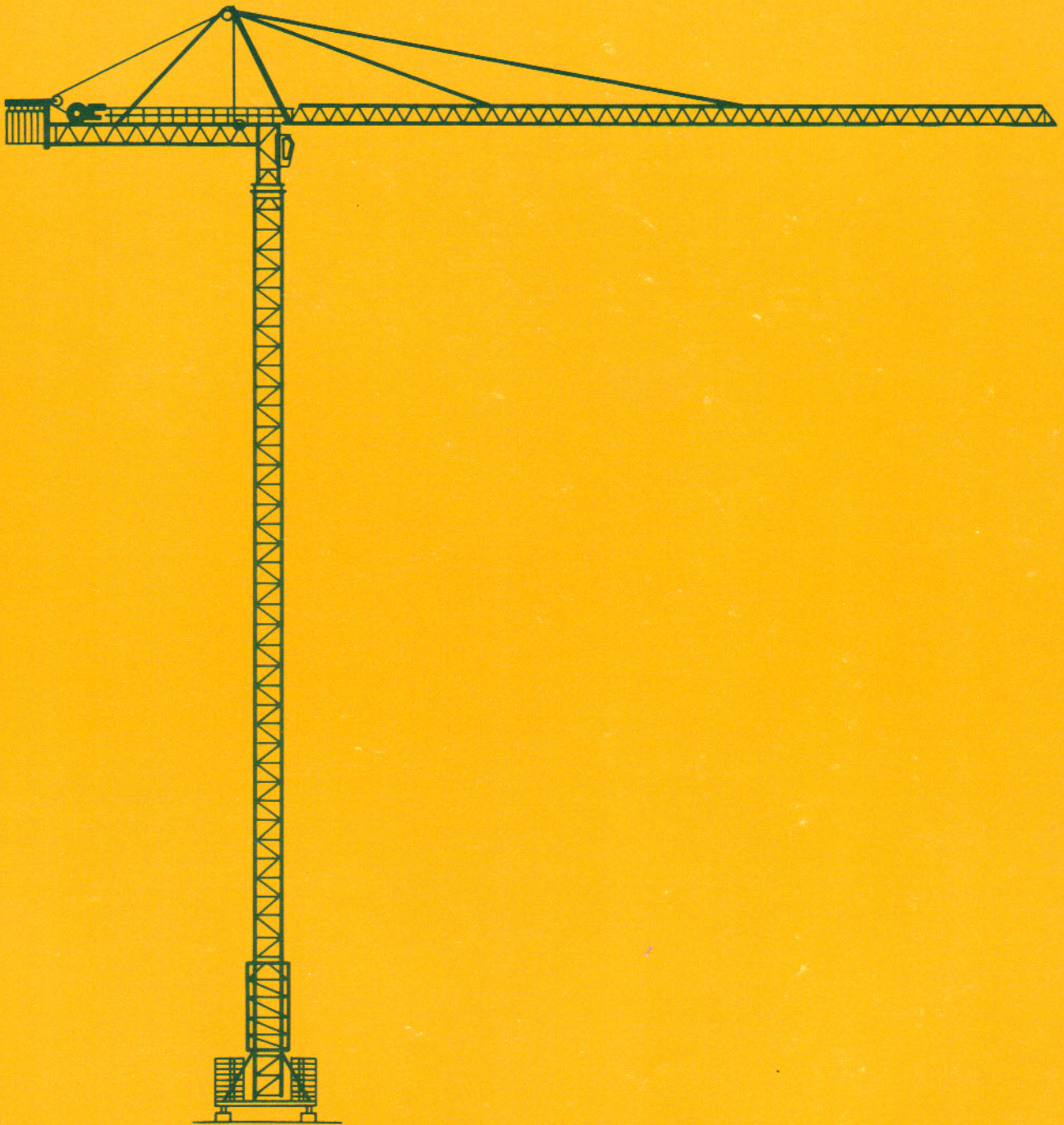


TOPKIT H4/36 B



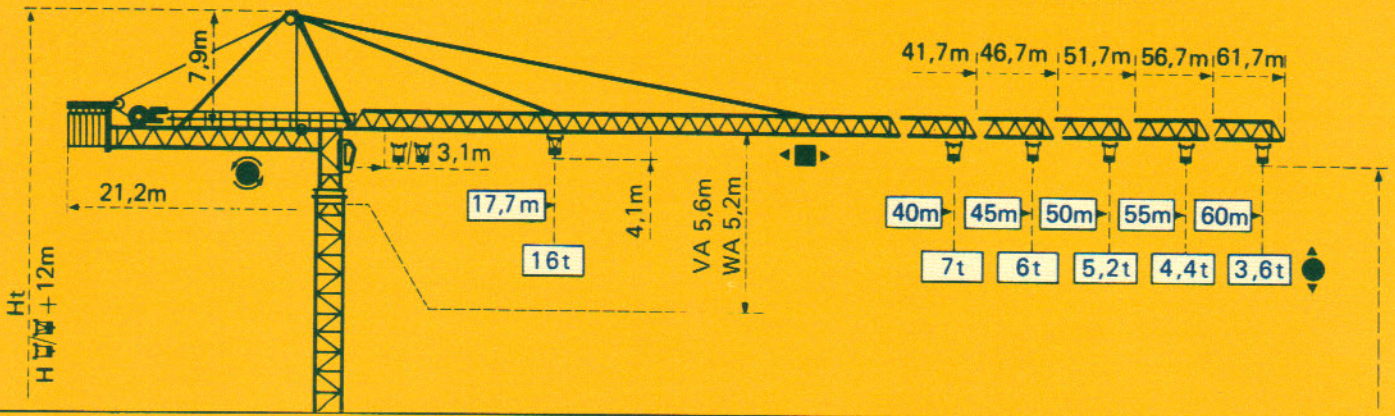
TOPKIT H4/36 B

Potain



Potain TOPKIT H4/36 B

Cotes Abmessungen Dimensions Dimensiones



Måture Mast Mast Mástil
 ∅ 2m x 2m

Måture Mast Mast Mástil
 ∅ 2,15m x 2,15m

PA 654

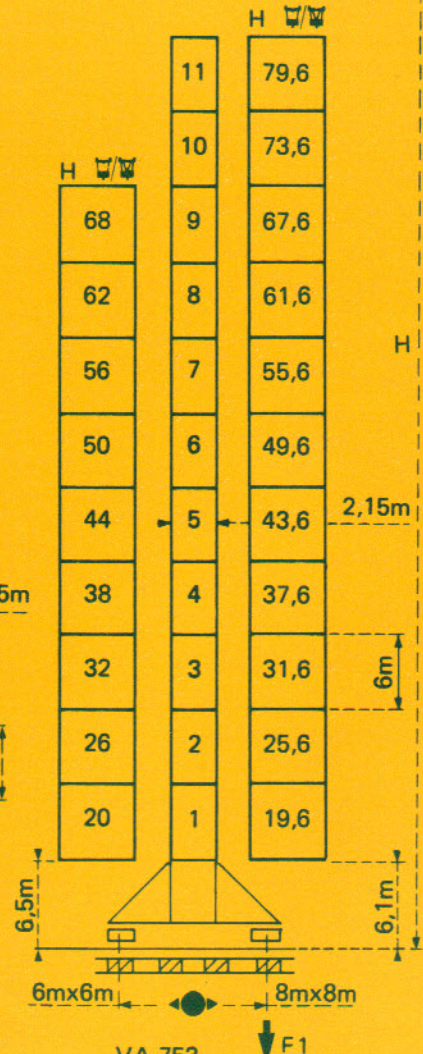
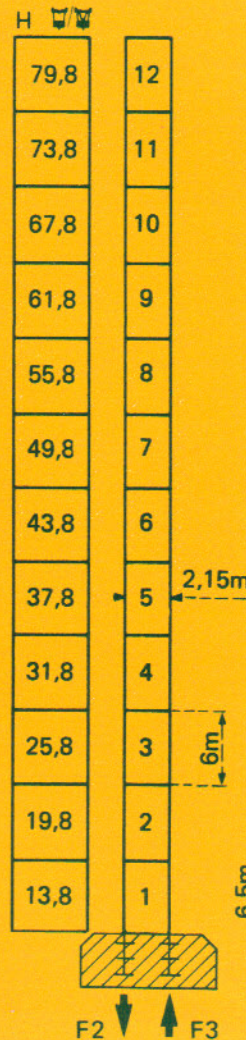
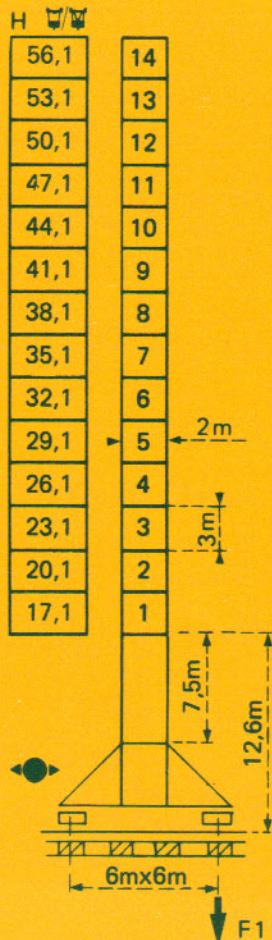
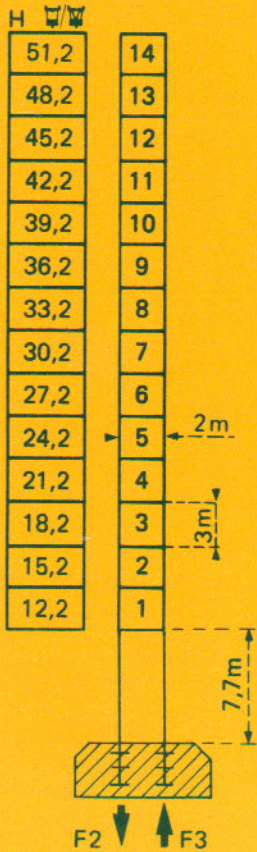
VA 654

PA 752

VA 753

WA 750

$$H_{\square} = H_{\square/\square} + 1m$$



F = Réactions Eckdrücke Reactions Reacciones

F2	● 141 t	■ 134 t
F3	● 95 t	■ 91 t
	78,5 t	

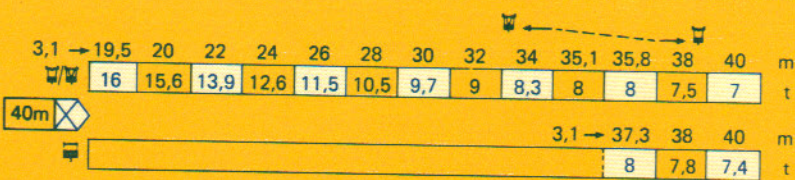
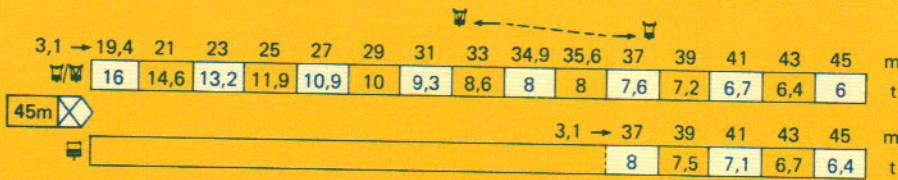
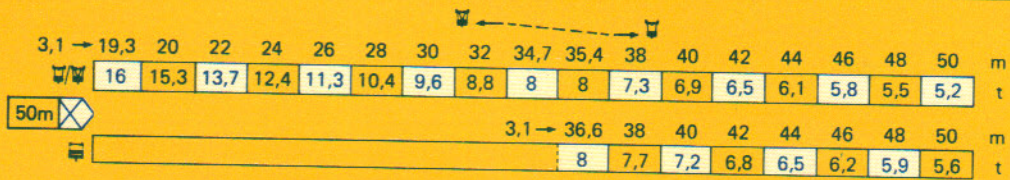
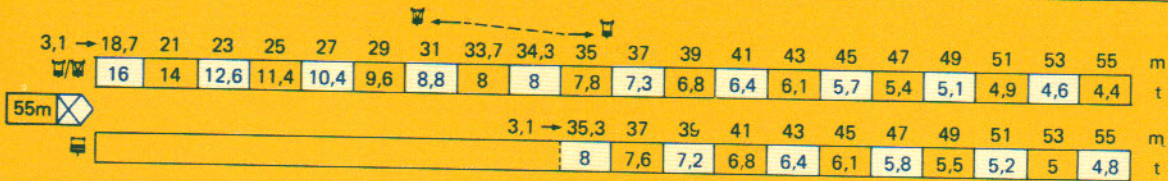
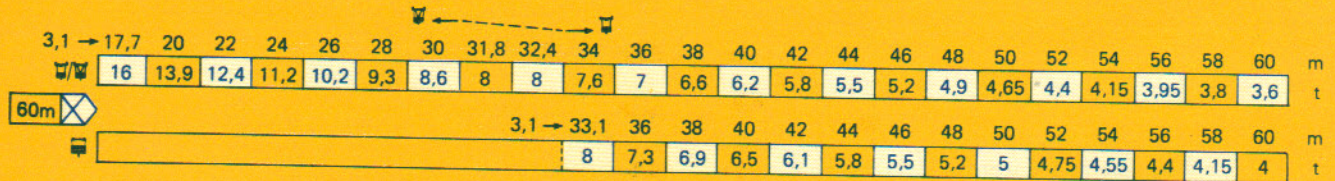
F1	● 86 t	■ 93 t
	93 t	

F2	● 162 t	■ 192 t
F3	● 103 t	■ 137 t
	102,5 t	

VA 753	F1 ● 98 t	■ 97 t
	109 t	
WA 750	F1 ● 93 t	■ 101 t
	118 t	

Courbes de charges Lastkurven Load curves Curvas de cargas

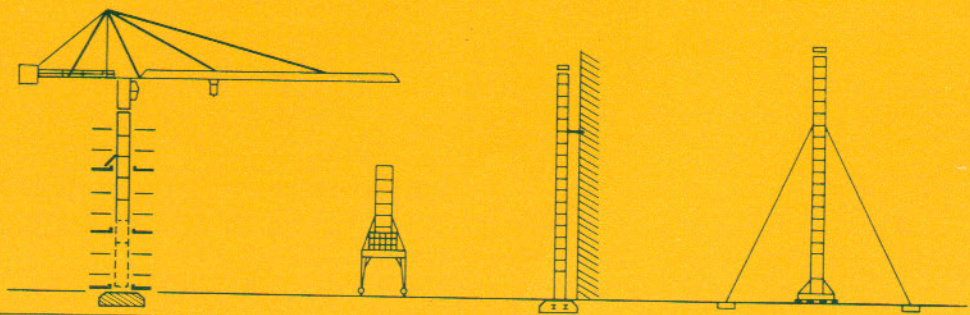
 Flèche Ausleger Jib Flecha




-  Chariot standard 2/4 brins. (En cas d'utilisation  déduire 0,2 t aux charges ).
-  Chariot optionnel 2 brins uniquement.
-  Standardlaufkatze 2/4 Stränge. (Bei Einsatz von  ist 0,2 t der Lasten von  abzuziehen.
-  Laufkatze in Sonderausführung mit nur 2 Strängen.
-  Standard trolley 2/4 fall. (When using  subtract 0,2 t from the loads ).
-  Optional trolley 2 fall only.
-  Carro standard 2/4 ramales. (En caso de utilizacion  quitar 0,2 t de las cargas ).
-  Carro opcional en 2 ramales solamente.

Implantations spéciales Einsatzmöglichkeiten Special mounting possibilities Instalaciones especiales


Nous consulter
Auf Anfrage
Consult us
Consultarnos




H > H maxi : nous consulter

- En service
- Hors service
-  A vide sans lest avec flèche et hauteur maximum.


H > H maxi : Auf Anfrage

- In Betrieb
- Ausser Betrieb
-  Ohne Last und Ballast mit Maximalausleger und Maximalhöhe.
























H > H maxi : consult us

- In service
- Out of service
-  Without load and ballast with longest jib and maximum height.

H > H máxi : Consultarnos

- En servicio
- Fuera de servicio
-  Sin cargas, sin lastre con flecha y altura máxima.

Mécanismes Antriebe Mechanisms Mecanismos

					m/min	t		ch-PS hp	kW					
Levage Heben Hoisting Elevación	Treuil standard Standardhubwerk Standard hoist winch Mecanismo standard	55 RCS 40 			0 - 25	8	maxi 468m	55	40,5					
					0 - 50	4								
					0 - 12,5	16								
					0 - 25	8								
			Treuil optionnel Wahlweises Hubwerk Optional winch Mecanismo opcional	120 LMD 40 S 						0 → 48	8	maxi 593m	120	88,3
										0 → 97	4			
					0 → 194	2								
					0 → 24	16								
					0 → 48	8								
					0 → 97	4								
	Distribution - Katzfahren Trolleying - Distribución			15 DRC 8		0 - 86 4 → 43			14	10,3				
	Orientation - Schwenken Slewing - Orientación			OMD 85		0 → 0,9 tr/min U/min-rpm			2 x 12	2 x 8,8				
Translation Kranfahren Travelling Traslación	▲ Standard Standard Standard Standard	VA 654 	▲	RT 443 A1 2 V	15 - 30			4 x 5	4 x 3,7					
			▲▲	RT 426 C1	16			2 x 6,5	2 x 4,8					
	▲▲ Changement de poste Umsetzen Repositioning Cambio de sitio	R ≥ 12m	▲▲▲	RC 646 AR H ≤ 41,1m	10 - 50			4 x 6,8	4 x 5					
			▲	RT 544 A1 2 V	13,5 - 27			4 x 7	4 x 5,2					
	▲▲	R ≥ 12m	▲▲	RT 544 A1	13,5			4 x 4	4 x 3					
			▲▲▲	RC 646 AR H ≤ 38 m	10 - 50			4 x 7	4 x 5					
	▲▲▲ Rapide Schnell Fast Rápida	WA 750 	▲	RT 544 A1 2 V	13,5 - 27			4 x 7	4 x 5,2					
			▲▲	RT 544 A1	13,5			4 x 4	4 x 3					
			▲▲▲	RC 646 AR H ≤ 37,6 m	10 - 50			4 x 7	4 x 5					
	Puissance électrique nécessaire Anschlusswert Necessary electric power Potencia electrica necesaria			Réseau - Netzstrom - Mains supply - Red				RCS : 75 kVA LMD : 160 kVA						
		Groupe électrogène - Stromaggregat Generator set - Grupo electrogeno				Nous consulter Auf Anfrage Consult us Consultarnos								

 Potain

18, rue de Charbonnières B.P 173 - F 69130 ECULLY
Tél. (7) 833.81.81 Téléx 330 179
EXPORT. 89 Av. du Pdt Roosevelt - CHEVILLY - LARUE
F 94150 RUNGIS - Tél. (1) 687.22.23 - Téléx 270001
POTAIN GmbH - D 6082 MÖRFELDEN - WALLDORF
Nordendstr. 79-87 - Postfach 420 - Tel. (6 105) 5091 - Telex 4 185745
POTAIN SUISSE S.A. - CH 5115 MÖRIKEN WILDEGG
Tel. 64.53.19.91 - Telex 68294

Ref. 8041 EYT 2 Printed in France Modifications réservées. Änderungen vorbehalten. Subject to modification. Modificaciones reservadas.