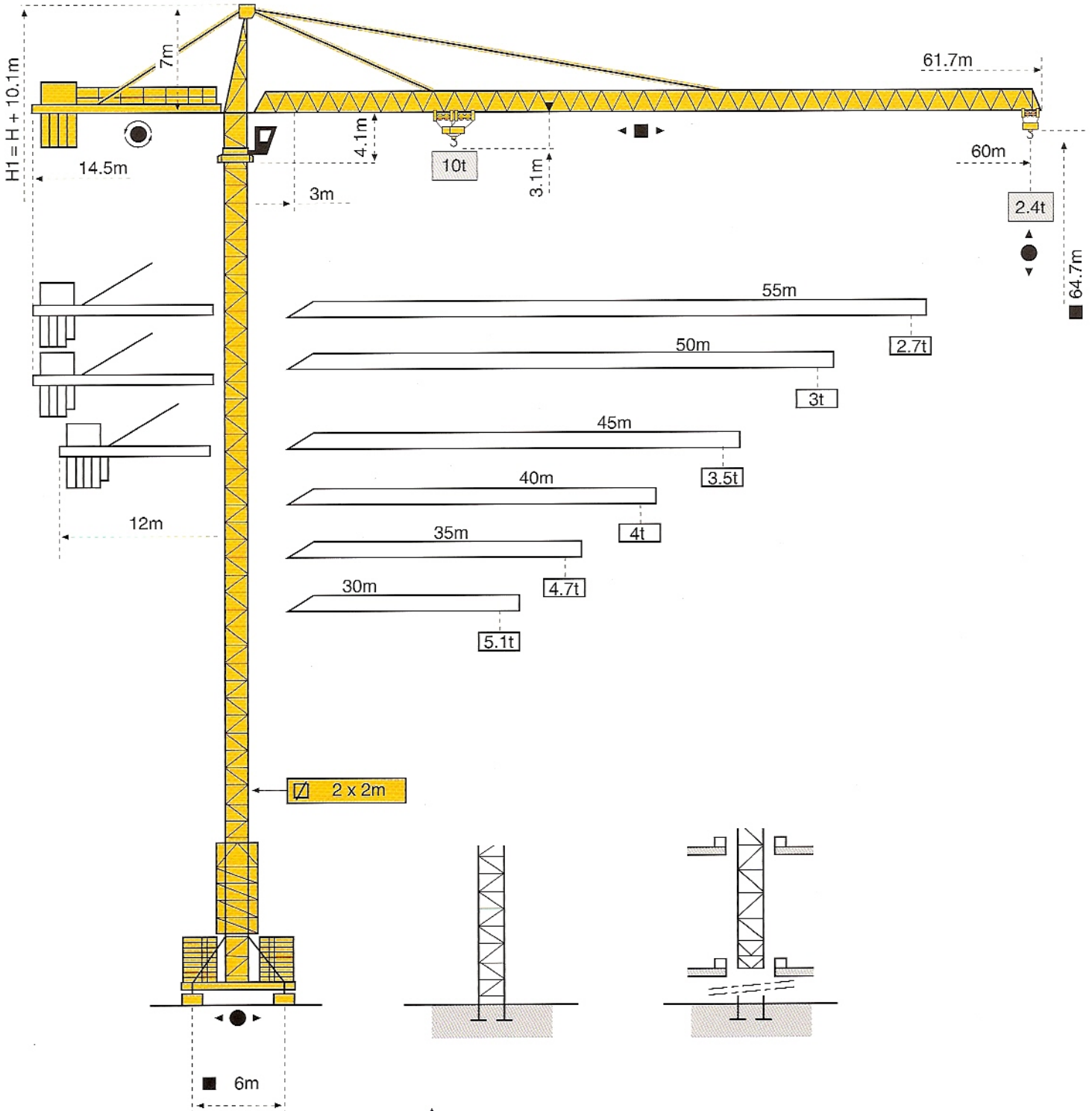


MC 205B



Masts / Reactions

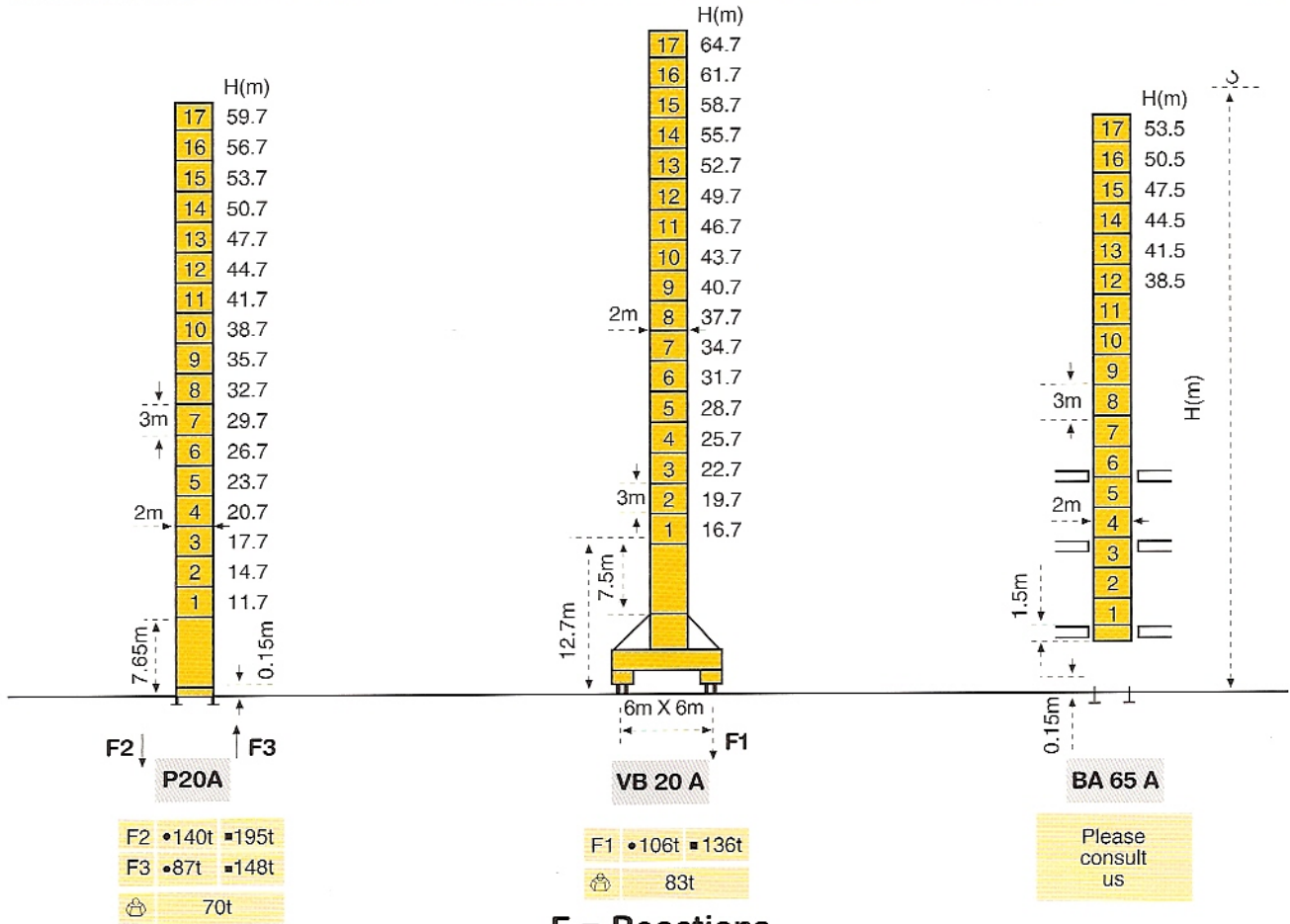
Masts



2m

Jib

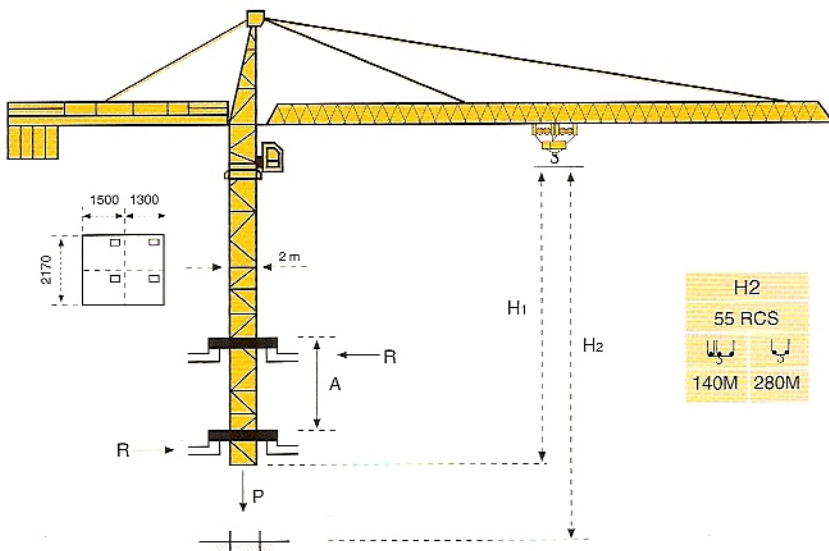
30m \Rightarrow 60m



F = Reactions

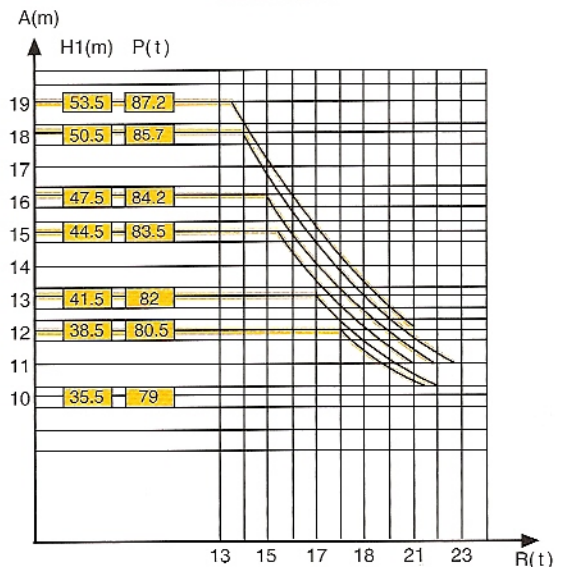
- In service
- Out of service
- 🏗 Without load and ballast with longest jib and maximum height

Climbing crane

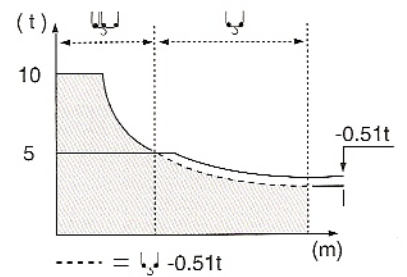
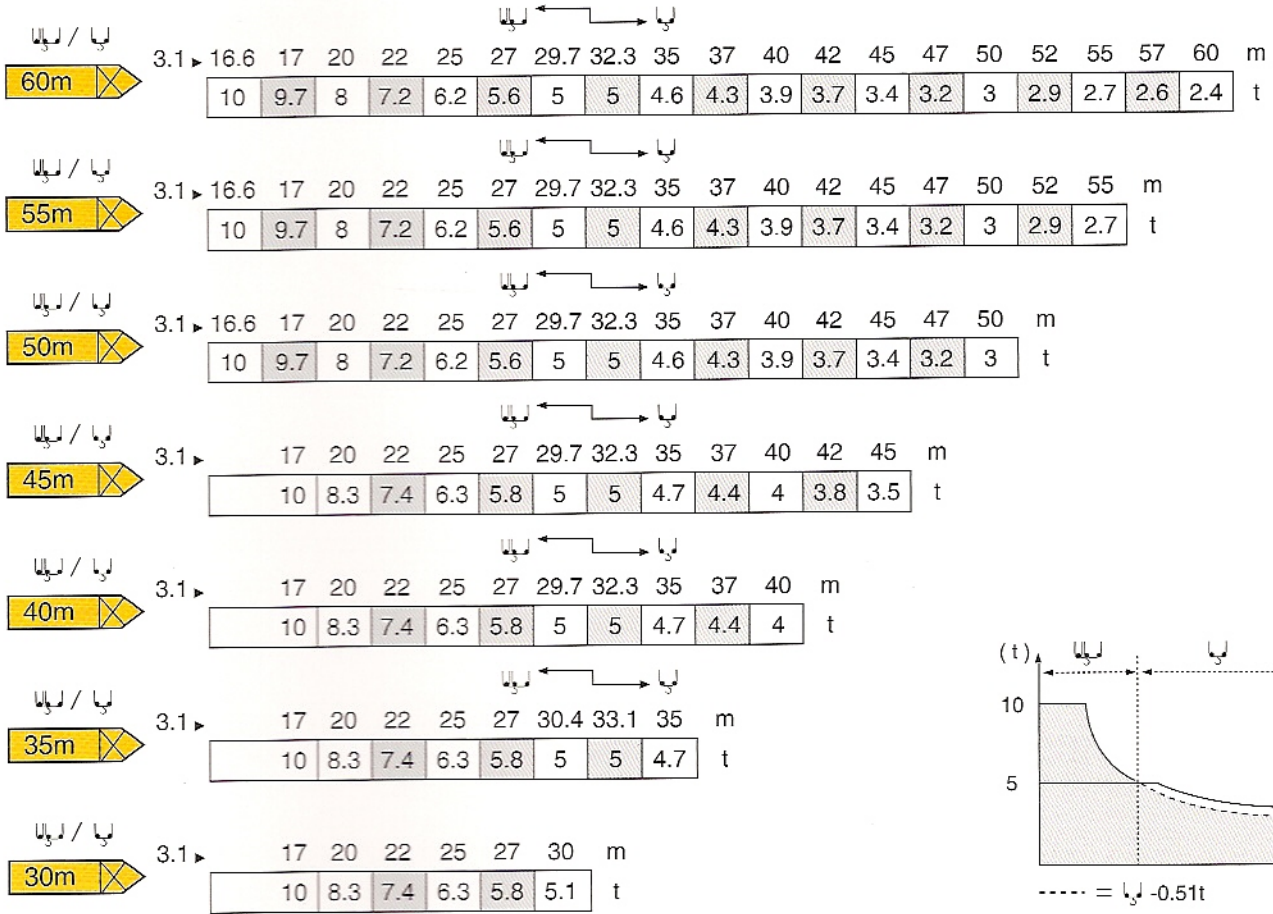


A Distance between collars
P Crane weight (in service)
H1 Crane height
R Horizontal reaction

BA 65 A

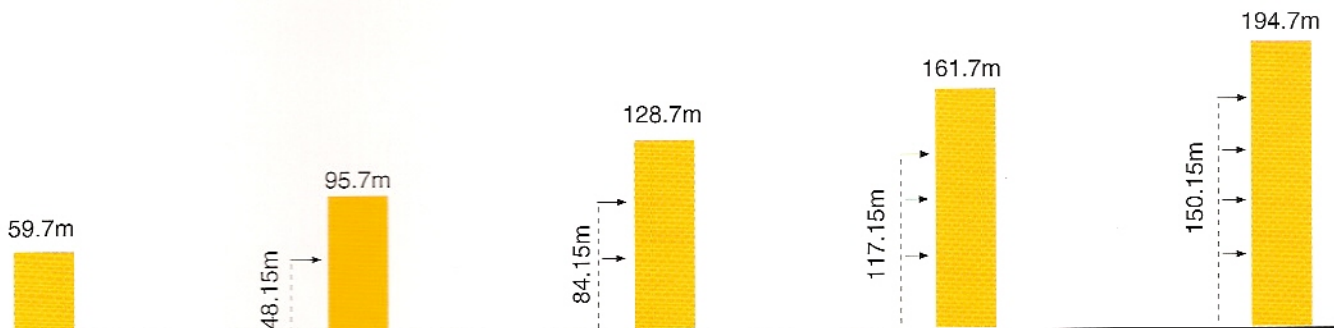


Load diagrams


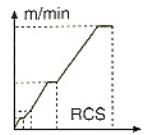

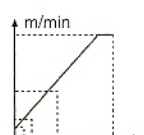

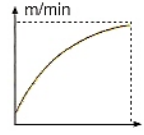

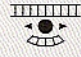



Anchorage

P20A



Mechanisms

		m/min	t	m/min	t	ch-Ps hp	kW	
Hoisting 	 55 RCS 25/13 VAI	↘ ↗		↘ ↗				
		0 ⇒ 42 0 ⇒ 84	5.0 2.6	0 ⇒ 21 0 ⇒ 42	10.0 5.2	55	40.5	560m >560m*
Trolleying 	 5 D3 V4	15 ⇒ 58 m/min				5	3.7	
Slewing 	 RCV 145	0 ⇒ 0.8 tr/min (rpm)				2 x 6	2 x 4.4	
Travelling	VB 20A  R ≥ 13M RT 544 A1 2V	13.5 ⇒ 27.0 m/min				4 X 7	4 X 5.2	
CEI 38 	IEC 38	kVA				Generator Set		
400 V (+6% - 10%) 50 Hz		55 RCS : 75 kVA				*		

* Please consult us.

Subject to Modification



GROVE
POTAIN 

Manitowoc Crane Group Asia Pte Ltd
Manitowoc Crane Group

26 Benoi Road
Singapore 629 898
Tel: 65-6861 7133
Fax (Admin/Sales) : 65-6862 4040
Fax (Service/Parts) : 65-6862 4142
www.manitowoccrane.com

Copyright. © POTAIN 2003

KIL KOREA INTERNATIONAL, LTD.
(주)코리아인터내셔널

RM 1206 Parkview Office Tower
6 Jeongja-dong, Bundang-gu,
Seongnam-si, Gyeonggi-do 463-863, Korea
Tel : (031)783-2400, 3900 Fax : (031)783-2403, 3910
http://www.korea-intl.com e-mail:webmaster@korea-intl.com

MC 205B

Ref: 2003.06

