

CITY CRANE MC 65

LLD 1



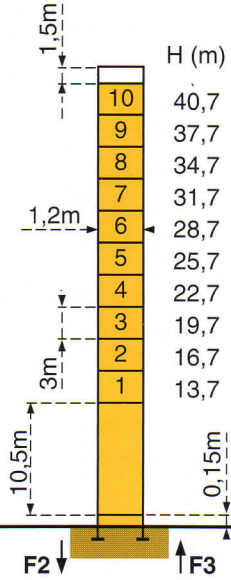
Mats - Maste - Masts Mástil
Torre - 塔身



□ 1,2m

Flèche - Ausleger - Jib
Flecha - Braccio - 起重臂
21,5m → 42m

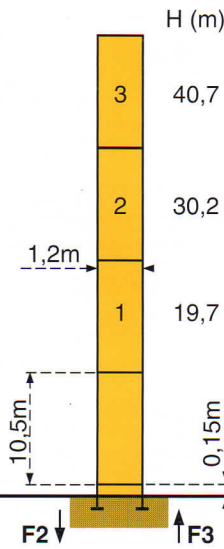
P 12A



F2	● 61t	■ 93t
F3	● 49t	■ 81t

🏠	15,5t
---	-------

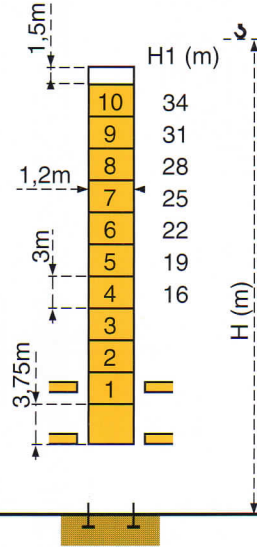
P 12A



F2	● 61t	■ 93t
F3	● 49t	■ 81t

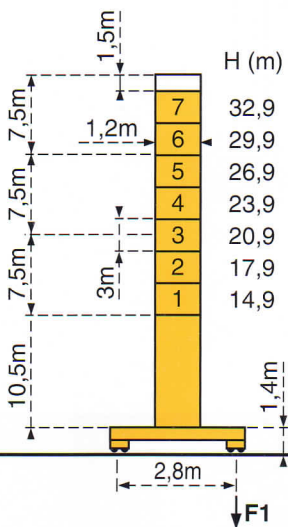
🏠	15,5t
---	-------

B 125A



Voir ci-contre
Siehe nebenstehend
See opposite
Ver pagina opuesta
Vedi pagina accanto
见旁图

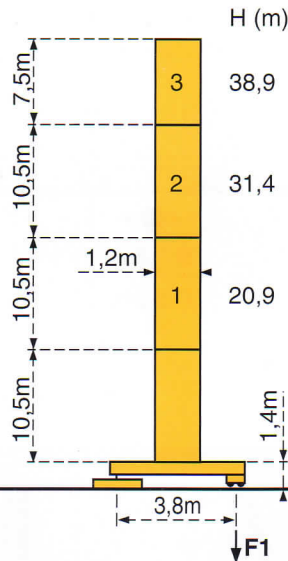
ZE 12A



F1	● 40t	■ 44t
----	-------	-------

🏠	18t
---	-----

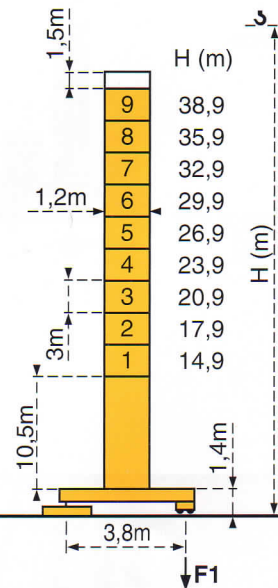
ZF 12A



F1	● 38t	■ 48t
----	-------	-------

🏠	20,5t
---	-------

ZF 12A



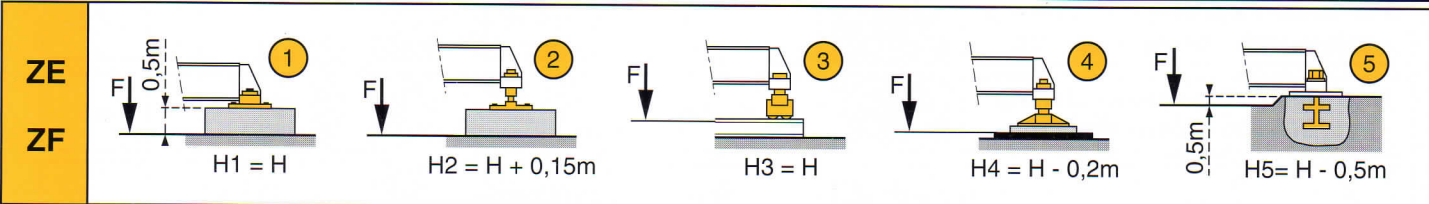
F1	● 38t	■ 48t
----	-------	-------

🏠	20,5t
---	-------

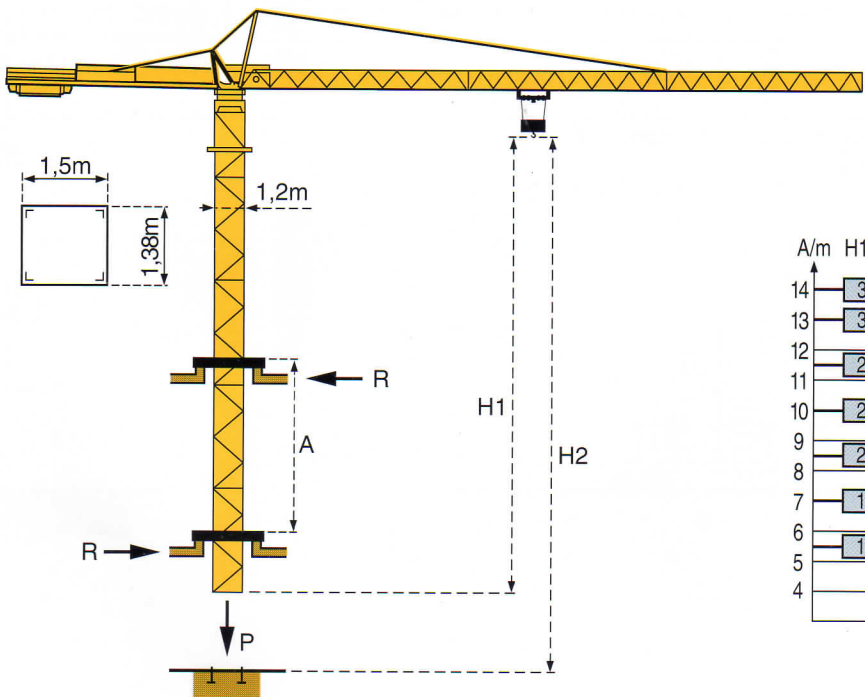
F = Réactions - Eckdrücke - Reactions - Reacciones - Reazioni - 反力

Courbes de charges - Lastkurven - Load diagrams - Curvas de cargas - Curve di carico - 负荷曲线

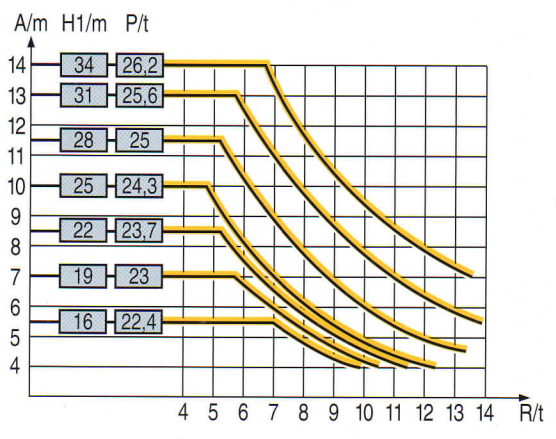
	Flèche Ausleger Jib Flecha Braccio 起重臂
1,8 →	22,9 25 27 30 32 35 37 40 42 m
42m	2,5 2,26 2,06 1,82 1,68 1,51 1,41 1,28 1,2 t
1,8 →	22,9 25 27 30 32 35 36,5 m
36,5m	2,5 2,26 2,06 1,82 1,68 1,51 1,43 t
1,8 →	23,3 25 27 30 31,5 m
31,5m	2,5 2,3 2,1 1,85 1,75 t
1,8 →	22,9 25 26,5 m
26,5m	2,5 2,26 2,11 t
1,8 →	21,5 m
21,5m	2,5 t



Télescopage sur dalles - Kletterkrane im Gebäude - Climbing crane
Telescopage guas trepadoras - Gru in cavedio - 楼板上顶升

















B 125A



A Distance entre cadres	A Abstand zwischen den Rahmen	A Distance between collars	A Distancia entre marcos	A Distanza fra i telai
H1 Hauteur grue	H1 Kranhöhe	H1 Crane height	H1 Altura grúa	H1 Altezza gru
P Poids de la grue (en service)	P Krangewicht (in Betrieb)	P Crane weight (in service)	P Peso de la grúa (en servicio)	P Peso della gru (in servizio)
R Réaction horizontale	R Horizontalkräfte	R Horizontal reaction	R Reaccion horizontal	R Reazione orizzontale
A 各附着框之间距离	A 各附着框之间距离	P 工作状态下塔机重量	P 工作状态下塔机重量	R 水平反力
H1 工作状态下塔机高度	H1 工作状态下塔机高度	R 水平反力	R 水平反力	

- En service
- In Betrieb
- In service
- En servicio
- In servizio
- 工作状态
- Hors service
- Ausser Betrieb
- Out of service
- Fuera de servicio
- Fuori servizio
- 非工作状态
- ⊗ A vide sans lest avec flèche et hauteur maximum.
- ⊗ Ohne Last und Ballast mit Maximalausleger und Maximalhöhe.
- ⊗ Without load and ballast with longest jib and maximum height.
- ⊗ Sin carga, sin lastre con flecha y altura máxima.
- ⊗ A vuoto senza zavorra e con braccio massimo e altezza massima.
- ⊗ 空载, 无配重, 起重臂和高度均为最大值

Mécanismes - Antriebe - Mechanisms - Mecanismos - Meccanismi - 机构

				m/min	t		ch -PS hp	kW
Lévage Heben Hoisting Elevación Sollevamento 起升	15 PC 13 			7	2,5	98 m	15	11
				21	2,5			
				42	1,3			
	25 PC 13 			7	2,5	210 m	25	18,4
				36	2,5			
				72	1,3			
Distribution - Katzfahren - Trolleying Distribución - Dtribuzione - 变幅		3 D2 V5		21 - 42			3	2,2
Orientation - Schwenken - Slewing Orientación - Rotazione - 回转		RCV 40		0 → 0,8 tr/min U/min-rpm			6	4,5
Translation - Kranfahren - Travelling Traslación - Traslazione - 行走	ZE - ZF 	TVD 324 C1		26			2 x 4	2 x 2,9
Réseau - Netzstrom - Mains supply - Red - Rete elettrica - 电网						CEI 38 IEC 38	400V (+6%,-10%) 50Hz	
Puissance électrique nécessaire - Anschlusswert - Necessary electric power Potencia eléctrica necesaria - Potenza elettrica necessaria - 所需功率						15 PC : 25 KVA 25 PC : 35 KVA		
Groupe électrogène - Stromaggregat - Generator set - Grupo electrogeno - Gruppo elettrogeno - 发电机组						*		

*Nous consulter - Auf Anfrage - Consult us - Consultarnos - Consultateci - 请向我方咨询

Conforme aux directives CEE 84/534 et 87/405 sur le niveau acoustique - Gemäss EWG-Richtlinien 84/534 und 87/405 für den Schall- Leistungspegel
 In compliance with the EEC 84/534 and 87/405 Instructions on noise level - Conforme con las directivas CEE 84/534 y 87/405 sobre el nivel acustico
 Conforme alle direttive CEE 84/534 e 87/405 sul livello acustico - 符合 CEE 84/534 - CEE 87/405 声晌度规定



FEM 1.001-A3

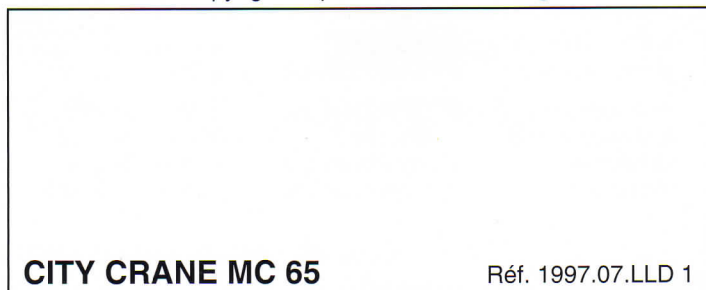
Copyright.Reproduction interdite © POTAIN 1997

POTAIN 

GRUPE LEGRIS INDUSTRIES

18.Rue de Charbonnières, B.P. 173-F 69132 ECULLY Cedex
 Tél. (33)04.72.20.20.20 - Fax (33)04.72.20.20.00
 http://www.potain.fr - E-mail : mkt@potain.fr

POTAIN GmbH Deutschland Tel : 06.105.704.0
 SIMMAPOTAIN Italia Tel : 039.65.631
 Zhangjiagang POTAIN China Tel : 520. 877.1451



CITY CRANE MC 65

Réf. 1997.07.LLD 1

修改权在我方

Modifiche riservate

Modificaciones reservadas

Subject to modification

Änderungen vorbehalten

Modifications réservées

Printed in France

Realisation SODIPE