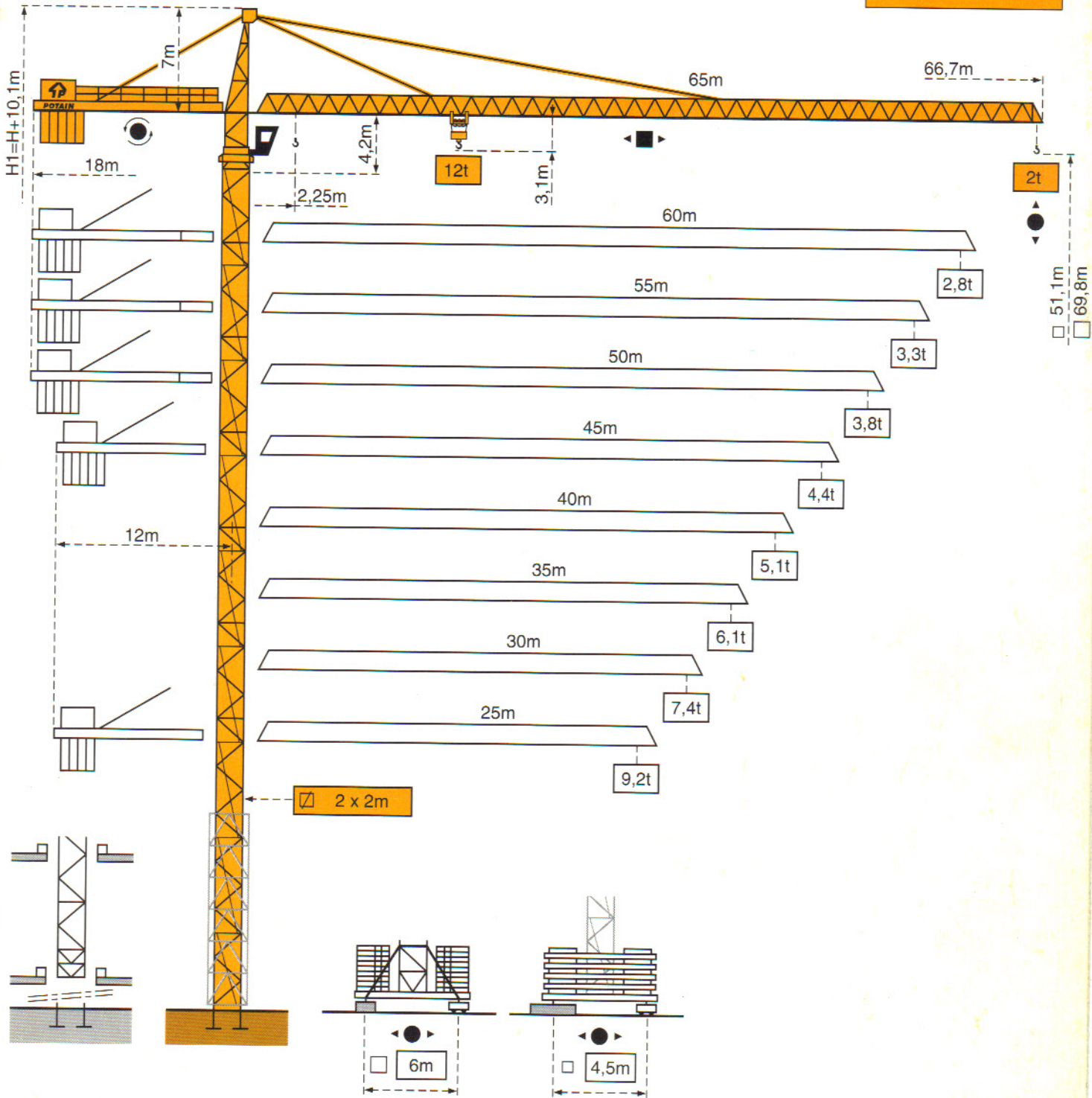


**TOPKIT MD 250
"matic"**



TOPKIT MD 250 "matic"

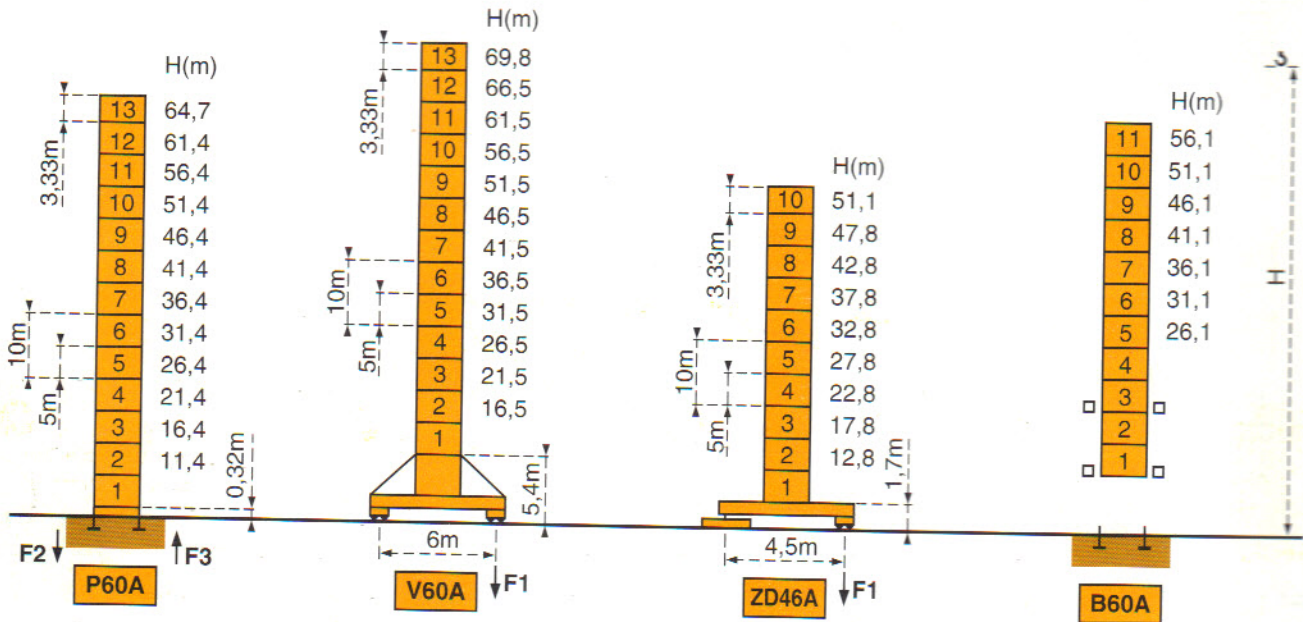
POTAIN  [®]

Mats - Maste - Masts - Mástil - Torre



□ 2 m
MD 250 J12

Flèche - Ausleger - Jib
Flecha - Braccio
25m → 65m



F2	● 158t	■ 216t
F3	● 106t	■ 170t
	● 73t	

F1	● 105t	■ 141t
	● 86t	

F1	● 93t	■ 98t
	● 78t	

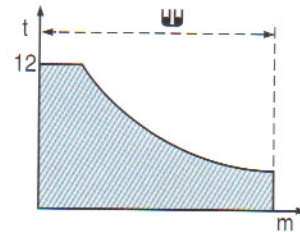
Nous consulter
Auf Anfrage
Consult us
Consultarnos
Consultateci

F = Réactions - Eckdrücke - Reactions - Reacciones - Reazioni

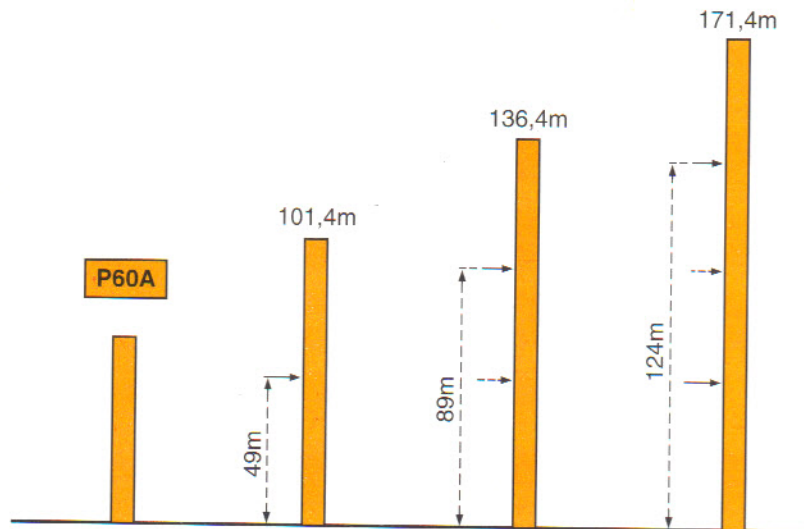
Flèche
Ausleger
Jib
Flecha
Braccio

Courbes de charges - Lastkurven - Load diagrams - Curvas de cargas - Curve di carico

65m	12	10	8,9	7,7	7	6,1	5,6	5	4,7	4,2	3,9	3,6	3,3	3	2,87	2,63	2,49	2,29	2,16	2	m
	17,1	20	22	25	27	30	32	35	37	40	42	45	47	50	52	55	57	60	62	65	t
60m	12	11,4	10,2	8,8	8	7	6,5	5,8	5,4	4,9	4,6	4,2	4	3,6	3,4	3,2	3	2,8			m
	19,1	20	22	25	27	30	32	35	37	40	42	45	47	50	52	55	57	60			t
55m	12	11,7	10,5	9	8,2	7,3	6,7	6	5,6	5,1	4,8	4,3	4,1	3,8	3,6	3,3					m
	19,5	20	22	25	27	30	32	35	37	40	42	45	47	50	52	55					t
50m	12	11,8	10,6	9,1	8,3	7,3	6,8	6	5,6	5,1	4,8	4,4	4,1	3,8							m
	19,6	20	22	25	27	30	32	35	37	40	42	45	47	50							t
45m	12	11,8	10,6	9,1	8,3	7,3	6,8	6	5,6	5,1	4,8	4,4									m
	19,6	20	22	25	27	30	32	35	37	40	42	45									t
40m	12	11,8	10,6	9,1	8,3	7,3	6,8	6	5,6	5,1											m
	19,6	20	22	25	27	30	32	35	37	40											t
35m	12	11,9	10,6	9,2	8,4	7,4	6,8	6,1													m
	19,8	20	22	25	27	30	32	35													t
30m	12	11,9	10,7	9,2	8,4	7,4															m
	19,9	20	22	25	27	30															t
25m	12	11,9	10,7	9,2																	m
	19,9	20	22	25																	t



Ancrages - Verankerungen - Anchorages - Anclaje - Ancoraggio



■ En service
● Hors service

■ In Betrieb
● Ausser Betrieb

■ In service
● Out of service

■ En servicio
● Fuera de servicio

■ In servizio
● Fuori servizio

⊗ A vide sans lest
avec flèche et hauteur
maximum.


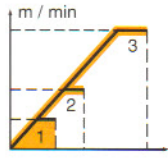

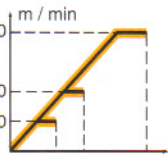

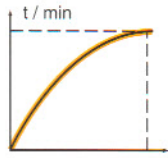



⊗ Ohne Last und Ballast
mit Maximalausleger und
Maximalhöhe.

⊗ Without load and
ballast with longest jib
and maximum height.

⊗ Sin carga, sin
lastre con flecha y
altura máximas.

⊗ A vuoto senza zavorra
e con braccio massimo e
altezza massima.



Mécanismes - Antriebe - Mechanisms - Mecanismos - Meccanismi

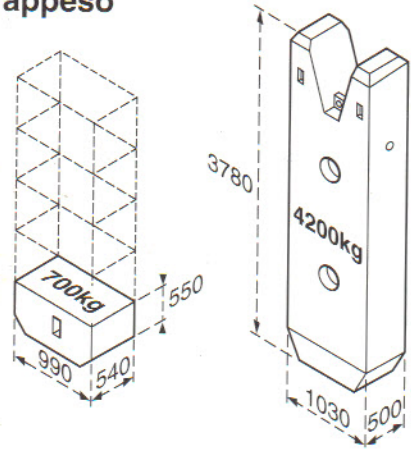
				m/min	t		ch -PS hp	kW	
Levage Heben Hoisting Elevación Sollevamento		 12t	55	1	0 → 16	12	344m	55	40,5
			LTV	2	32	6			
			30	3	64	3			
			80	1	0 → 24	12	601m	80	60
			LTV	2	48	6			
			30	3	96	3			
Ditribution Katzfahren Trolleying Distribución Ditribuzione			6 D3 V4	10-40-80			6	4,4	
Orientation Schwenken Slewing Orientación Rotazione			RCV 185	0 → 0,8 tr/min rpm			2x9	2x6,6	
Translation Kranfahren Travelling Traslación Traslazione	 ZD 46 A	RT 443 A1 2V	15 - 30			4x5	4x3,7		
		 V 60 A	RT 544 A1 2V	13,5 - 27			4x7	4x5,2	
			R ≥ 13m	TCV 649 ARC H ≤ 41,5m	10 - 50			4x6,8	4x5
Réseau - Netzstrom - Mains supply - Red - Rete elettrica							370V-400V.50Hz		
Puissance électrique nécessaire - Anschlusswert - Necessary electric power Potencia eléctrica necesaria - Potenza elettrica necessaria							55 LTV : 80KVA 80 LTV : 105KVA		
Groupe électrogène - Stromaggregat - Generator set - Grupo electrogeno - Gruppo elettrogeno							*		

*Nous consulter - Auf Anfrage - Consult us - Consultarnos-Consultateci





Conforme à la directive CEE 84/534 sur le niveau acoustique - Gemäss EWG-Richtlinie 84/534 Schall- Leistungspegel
 In compliance with the EEC 84/534 Instruction on noise level - Conforme con la direttiva CEE 84/534 sobre el nivel acustico
 Conforme colla direttiva CEE 84/534 sul livello acustico

Lest de contre-flèche - Gegenauslegerballast - Counter-jib ballast
Lastre de contra flecha - Contrappeso

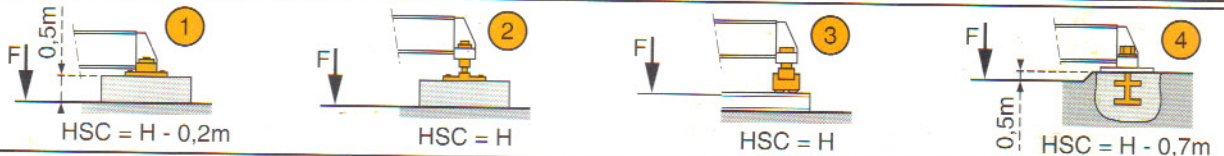
		 (t)
65m	18m	18 900 = (4x4200)+(3x700)
60m	18m	18 200 = (4x4200)+(2x700)
55m	18m	15 400 = (3x4200)+(4x700)
50m	18m	12 600 = (3x4200)
45m	12m	24 500 = (5x4200)+(5x700)
40m	12m	22 400 = (5x4200)+(2x700)
35m	12m	19 600 = (4x4200)+(4x700)
30m	12m	15 400 = (3x4200)+(4x700)
25m	12m	13 300 = (3x4200)+(1x700)



Lest de base - Grundballast - Base ballast - Lastre de base - Zavorra di base

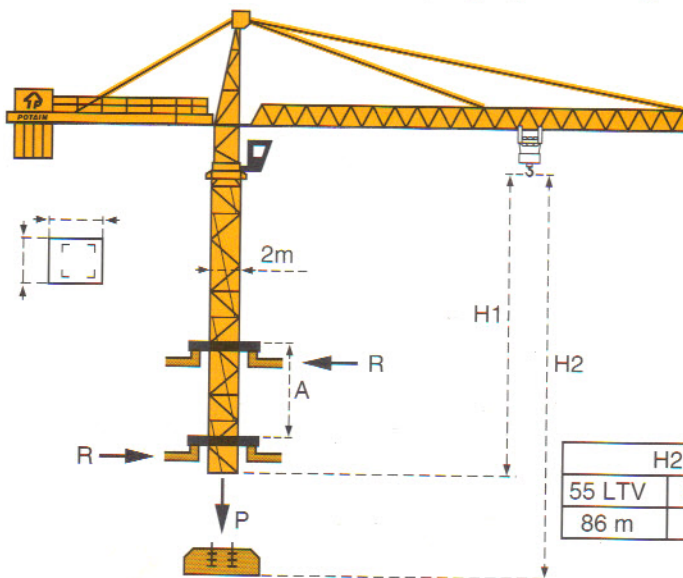
H(m)	 (t)	H(m)	 (t)
69,8	108		
66,5	96		
61,5	72		
56,5	48	51,1	75
51,5	36	47,8	75
46,5	36	42,8	75
41,5	36	37,8	75
36,5	36	32,8	75
31,5	36	27,8	75
26,5	36	22,8	75
21,5	36	17,8	75
16,5	36	12,8	75
V 60 A 		ZD 46 A 	
2m			

**ZD
46
A**



Télescopage sur dalles - Kletterkrane im Gebäude - Climbing crane
Telescopage gruas trepadoras - Gru in cavedio

B 60 A



Nous consulter
 Auf Anfrage
 Consult us
 Consultarnos
 Consultateci

- | | | | | |
|---------------------------------|-------------------------------|-----------------------------|---------------------------------|--------------------------------|
| A Distance entre cadres | A Abstand zwischen den Rahmen | A Distance between collars | A Distancia entra marcos | A Distanza fra i telai |
| H1 Hauteur grue | H1 Kranhöhe | H1 Crane height | H1 Altura grúa | H1 Altezza gru |
| P Poids de la grue (en service) | P Krangewicht (in Betrieb) | P Crane weight (in service) | P Peso de la grúa (en servicio) | P Peso della gru (in servizio) |
| R Réaction horizontale | R Horizontalkräfte | R Horizontal reaction | R Reaccion horizontal | R Reazione orizzontale |



Modifications réservées / Änderungen vorbehalten / Subject to modification / Modificaciones reservadas / Modifiche riservate / Printed in France

Document pour usage commercial uniquement - Benutzung dieser Unterlagen nur für Verkaufszwecke - Document for commercial use only - Documento para uso comercial unicamente - Documento per uso commerciale solamente

Copyright.Reproduction interdite © POTAIN 1992

POTAIN 

GRUPE LEGRIS INDUSTRIES

18.Rue de Charbonnières, B.P. 173-F 69132 ECULLY Cedex
Tél. 72.20.20.20 - Télex 375 213 - Fax 72.20.20.00

POTAIN GmbH	Deutschland	Tel : 06.105.704.0
POTAIN U.K.	Great Britain	Tel : 0895.44.52.61
Simma POTAIN	Italia	Tel : 02.97.96.71
POTAIN Portugal	Portugal	Tel : 02.968.08.89

TOPKIT MD 250 "matic"

Réf. 1992.05 LEI 2

Réalisation SODIPE